



InDex® Recovery is designed for business continuance and disaster recovery at facilities with an existing functional onsite archive. InDex Recovery is a secondary archive utilized for image retrieval during a "declared event," including PACS upgrades and disasters.

The transparent solution operates as a backup to a client's onsite archive. Your medical images are stored permanently on optical media in nearline mode at InSiteOne's secondary (i.e., disaster recovery) data center. The data is accessible via the Internet to any authorized hospital personnel for viewing, and can be retrieved in seconds during a "declared event" at no additional cost.

In the event that a client chooses to implement a PACS or change platforms for diagnostic image viewing, the local archive may require a migration of the data to the new platform. With InDex Recovery, clients have an alternative to a migrationless transition — using their disaster recovery archive transitioned to an online mode for onsite storage and integration with the new platform. This seamless integration minimizes the time to transition for the new solution.

## Key Benefits

- **Fast Return to Operation (RTO) with rapid restoration of critical image data**
  - Your onsite image archive is replicated on optical media in InSiteOne's data recovery center for restoration in the event of a declared event, 24 hours a day, 365 days a year.
- **Reduced data migration requirements in the event of a PACS installation or platform change**
  - Storing all your images in a DICOM archive provides you with the ability to change imaging and PACS platforms without interrupting access to prior clinical data
- **Ensured compliance with HIPAA requirements**
  - Offsite storage of clinical imaging data protects you against data loss from natural and other disasters
- **Continuous monitoring to ensure the quality and accessibility of your data**
  - TruImage™ from InSiteOne assures continuous checking of archived data against a secure key to verify that what was stored is still accessible
  - Optical data and continuous verification eliminates risk of tampering and loss of original study.

## How It Works

InDex Recovery provides the client with DICOM compliant digital image storage and archival with optical media, located at InSiteOne's disaster recovery facility during the term of the agreement and for the legal storage lifetime of the image. (Storage is not a primary storage solution; rather, it is designed to provide an efficient means for restoring data lost in a system failure or destruction, fire, vandalism, or natural or other disaster.)

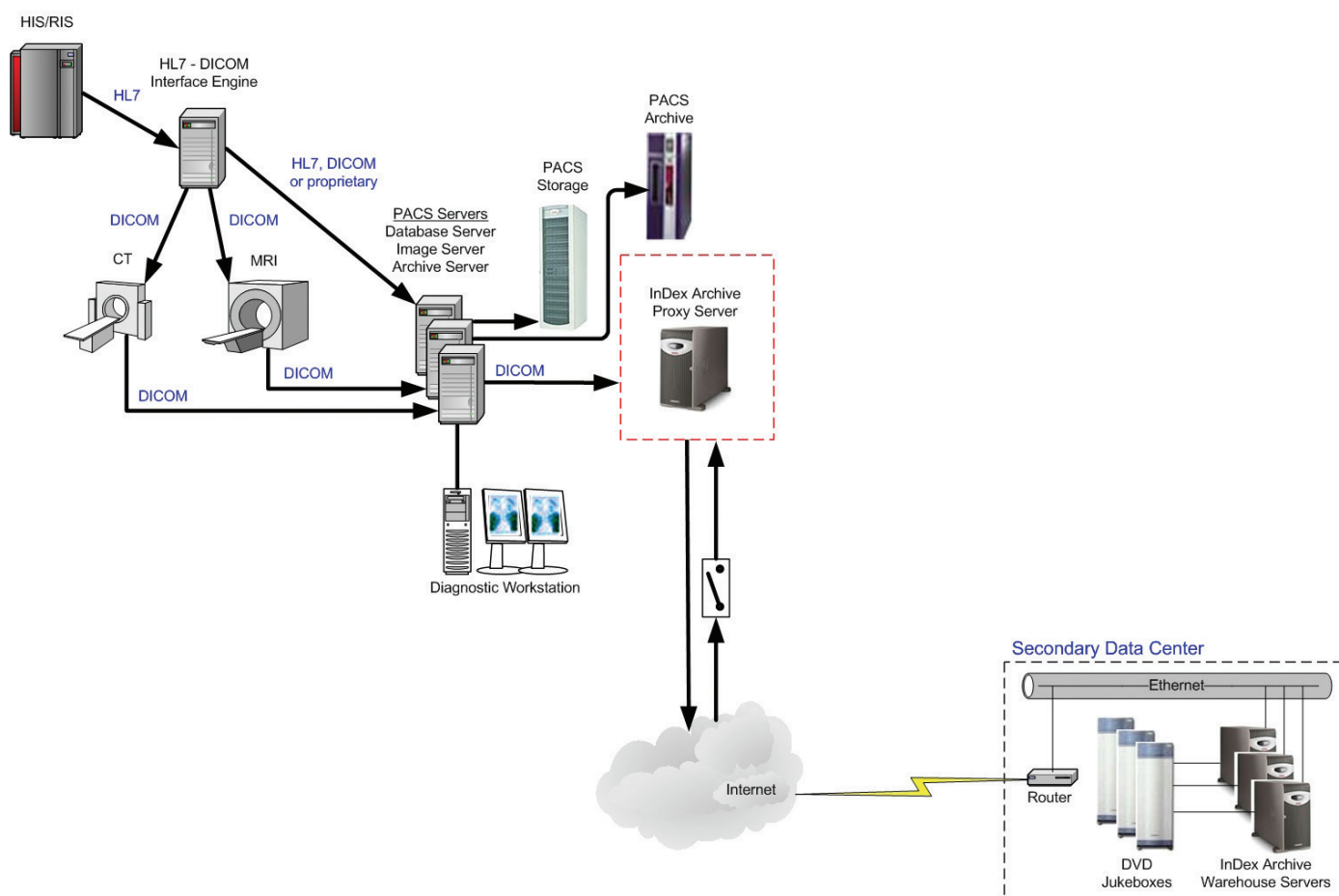
InDex Recovery provides the hardware and software required to manage the distribution of medical images to InSiteOne's offsite archive. The software allows for maximum utilization of available bandwidth from the client's site to InSiteOne disaster recovery data center. Transmission of the client's data to the storage facility

## How It Works (continued)

is provided via a secure Internet connection or a Virtual Private Network (VPN). Security is provided on multiple levels, including encryption, device isolation (that allow only InSiteOne devices to talk to the InSiteOne data center), and other proprietary security tools for monitoring and maintaining the integrity of the InDex archive.

In order to complement our service and to provide a complete solution, InSiteOne offers clients the option of including telecommunication transport services specifically for medical imaging. Sprint offers a state-of-the-art global network that assures end-to-end network performance and availability. Sprint's T1 service is widely respected for its superior backbone architecture and its intelligent routing that ensures speed, throughput, accuracy, and redundancy.

## How It Works



Copyright © 2005 InSiteOne, Inc.  
All Rights Reserved

Copyright © 2005 InSiteOne, Inc. All rights reserved. Specifications subject to change without notice. InDex Online, InDex Nearline, InDex Web, Index Recovery, Recovery Plus, InSiteOne Data Migration Services, InSiteOne Professional Services, InSiteOne Capital Partners, PACSscan and TrueIMAGE are trademarks of InSiteOne, Inc., Wallingford, CT. Other trademarks used herein are the property of their respective owners.